

PV Queen
Panel Foot Wallbed



Standard Cabinet - 50
65 x 90 x 17 [86]
Straight Top
Flat Headboard

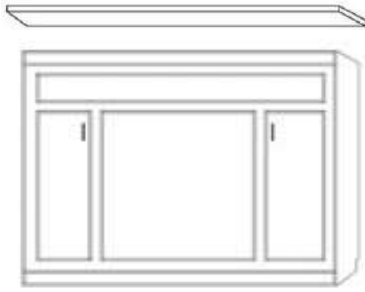
Supreme Cabinet - S50
70 x 90.5 x 24.5 [93]
Wrap Crown
Shelf Headboard
(only 85" piers)

Premium Cabinet - Z50
75 x 90x 20 [92]
Straight Top
Shelf Headboard
Interior Bookcases

Deluxe Cabinet - X50
75 x 90x 25 [92]
Curved Top
Shelf Headboard
Interior Bookcases

Ultra Cabinet - U50
80 x 90.5 x 23 [92]
Wrap Crown
Shelf Headboard
Interior Bookcases
(only 85" piers)

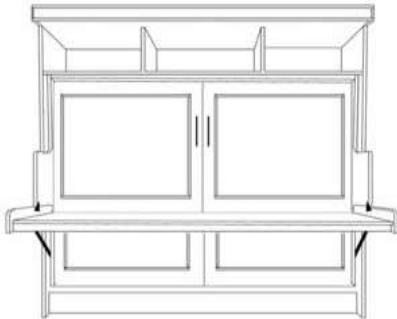
(Finished Top is included)



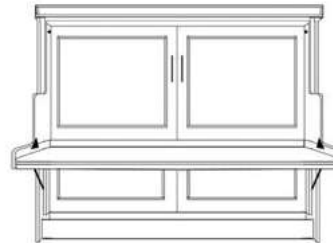
Portola Horizontal (PS50)
85 x 17 x 70.5 [66]
All Side Piers = - \$100; 70.5" tall



Vertical Portola Desk Bed (PB50)
68 x 49 x 90 [82]
Desk = 23.5 x 61



Horizontal Portola Desk Bed w/hutch (PW50)
88.5 x 46.5 x 90 [70]
Desk = 23.5 x 82



Horizontal Portola Desk Bed (PB50)
88.5 x 46.5 x 76.5 [70]
Desk = 23.5 x 82

Standard Cabinet also available in: Full - 46: 59x85x17 [81] ★ ADD LIGHTS and a USB charger to any Wallbed! ★



nickel bar bronze bar bridge nickel bridge bronze bridge black bridge brass cody black cody nickel cody bronze cody gold



natural pebble maple bark sunset hazelnut

* Indicates a upgraded paint finish fee of 10%

Stain finishes are included with no additional fee



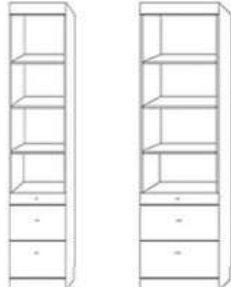
caramel cognac espresso cinnamon white * alabaster * cobalt blue *

NIGHTSTAND PIER with DOOR
2 drawers, pull out tray table,
Open shelf and upper door



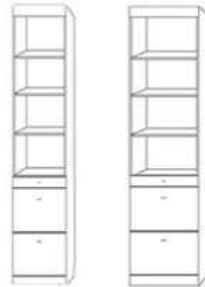
PUF 24x85
PUQ 24x90

NIGHTSTAND PIER CABINET
2 drawers, pull out tray table,
With open adjustable shelves



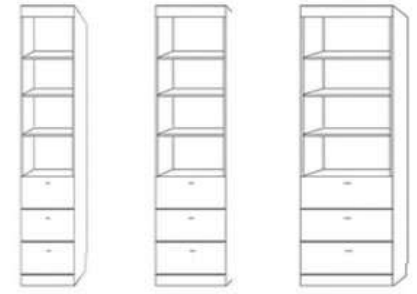
NFS 16x85 PNF 24x85
NGS 16x90 PNG 24x90

LATERAL FILES PIER CABINET
2 file drawers, pencil drawer
With open adjustable shelves



LFS 16x85 PLF 24x85
LGS 16x90 PLG 24x90

3 DRAWER PIER CABINET
3 drawers with open adjustable shelves



TFS 16x85 PTF 24x85 PGF 32x85
TGS 16x90 PTG 24x90 PGQ 32x90



WARDROBE
3 drawers, upper
door & clothes valet

PWF 24x85
PWG 24x90



FILE WARDROBE
2 lateral file drawers,
Pencil drawer with upper
door & clothes valet

PXF 24x85
PXG 24x90



3 DRAWER w/ DOOR
3 drawers, upper door

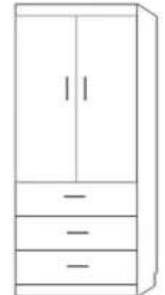
WFS 16x85
WGS 16x90



FILE WITH w/ DOOR
2 lateral file drawers,
Pencil drawer
with upper door

XFS 16x85
XGS 16x90

GUEST WARDROBE
3 drawers with
2 upper doors
& clothes valet



PWU 32x85

PLEASE NOTE

Horizontal Standard
Height of piers matches
height of the wallbed

Desk Bed no Hutch
Height of piers matches
height of the wallbed

ROLLING DESK CART
On castors, File Cart
Rolls underneath.
Finished open back



DC - 63w x 20d x 31h

ROLLING FILE CART
Lateral file drawer,
medium drawer and a
pencil drawer on castors.
Fits underneath Hidden
Desk beds and Desk Cart.
Finished back



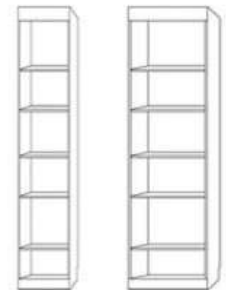
FC 16x16x29

NIGHTSTAND
Flush sides on
top, baseboard
notch. 2
drawers with a
pencil drawer



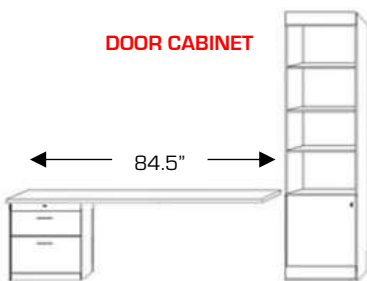
NS 24x16x29

BOOKCASE



BFS 16x85 PBF 24x85
BGS 16x90 PBQ 24x90
BFL 32x85
BQL 32x90

DOOR CABINET



FD - Desk Base
STRAIGHT Desktop

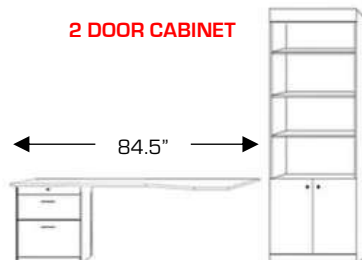


PCF 24x85
PCQ 24x90

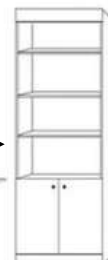


DFS 16x85
DQS 16x90

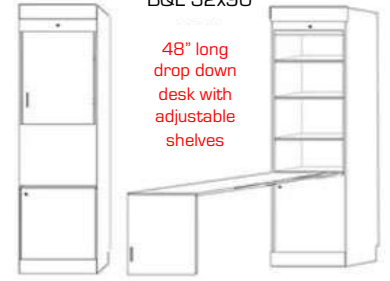
2 DOOR CABINET



LD - Desk Base
with SHAPED Desktop



DFL 32x85
DGL 32x90



MURPHY DESK PAF 24x85

Extra's & Add-Ons

- Add LED Light Bar & USB Charging Station
- Add Extra Shelves
- Add Clothes Hanging Rod to any pier
- Other :

About the NorCal Collection

This collection is made in the USA with sustainable hardwoods with veneers. This collection uses "through bolts", has a mattress platform that has internal support struts, and a foundation with 20' of structure material. The NorCal collection uses a piston lift system that has been tested for conditions for 16k cycles with no noticeable change in performance, and the pistons are guaranteed for life.