

**EV Queen**  
Panel Foot Wallbed

**Standard Cabinet - 50**  
65 x 90 x 17 (86)  
Straight Top  
Flat Headboard

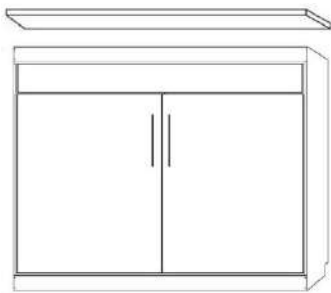
**Supreme Cabinet - S50**  
70 x 90.5 x 24.5 (93)  
Wrap Crown  
Shelf Headboard  
(only 85" piers)

**Premium Cabinet - Z50**  
75 x 90x 20 (92)  
Straight Top  
Shelf Headboard  
Interior Bookcases

**Deluxe Cabinet - X50**  
75 x 90x 25 (92)  
Curved Top  
Shelf Headboard  
Interior Bookcases

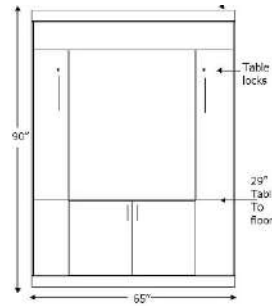
**Ultra Cabinet - U50**  
80 x 90.5 x 23 (92)  
Wrap Crown  
Shelf Headboard  
Interior Bookcases  
(only 85" piers)

(Finished Top is included)



**Euro Horizontal (ES50)**  
85 x 17 x 70.5 (66)

All Side Piers = - \$100; 70.5" tall



**Euro Table Bed (EVT50)**  
65 x 90 x 17 (86)

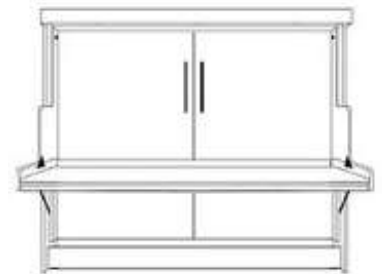
Table Size: 40w x 51 d  
(Available in all 5 Cabinets Options)



**Vertical Euro Desk Bed (EVB50)**  
68 x 49 x 90 (82) desk = 23.5 x 61



**Horizontal Euro Desk Bed w/hutch (EW50)**  
88.5 x 46.5 x 90 (70) desk = 23.5 x 82



**Horizontal Euro Desk Bed (EB50)**  
88.5 x 46.5 x 76.5 (70) desk = 23.5 x 82

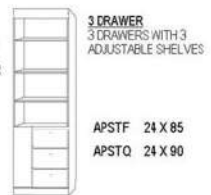
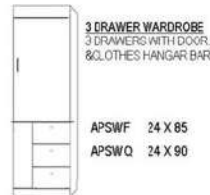
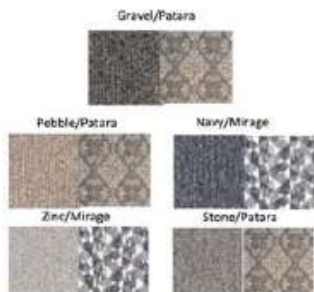
Standard Cabinet also available in: Full - 46: 59x85x17 (81) ★ ADD LIGHTS and a USB charger to any Wallbed! ★

## ADD A SOFA to this Wallbed

If ordering a Standard or Supreme Wallbed, choose from these pier options.



Sofa Dimensions: 76" w x 25" t x 33" deep  
5.5" arms, 66" of cushion, 16" from floor to top of cushion

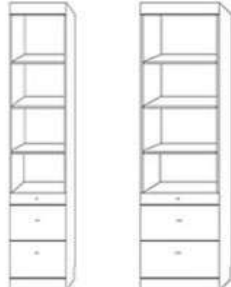


**NIGHTSTAND PIER with DOOR**  
2 drawers, pull out tray table,  
Open shelf and upper door



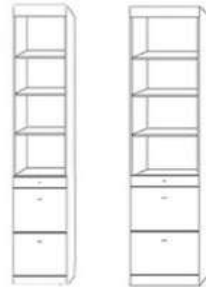
PUF 24x85  
PUQ 24x90

**NIGHTSTAND PIER CABINET**  
2 drawers, pull out tray table,  
With open adjustable shelves



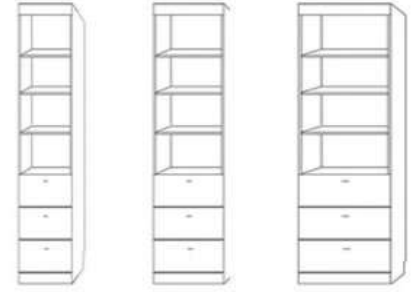
NFS 16x85 PNF 24x85  
NGS 16x90 PNG 24x90

**LATERAL FILES PIER CABINET**  
2 file drawers, pencil drawer  
With open adjustable shelves

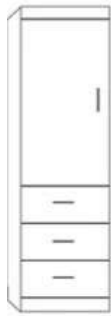


LFS 16x85 PLF 24x85  
LGS 16x90 PLQ 24x90

**3 DRAWER PIER CABINET**  
3 drawers with open adjustable shelves



TFS 16x85 PTF 24x85 PGF 32x85  
TGS 16x90 PTQ 24x90 PGQ 32x90



**WARDROBE**  
3 drawers, upper  
door & clothes valet

PWF 24x85  
PWQ 24x90



**FILE WARDROBE**  
2 lateral file drawers,  
Pencil drawer with upper  
door & clothes valet

PXF 24x85  
PXQ 24x90



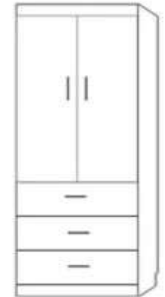
**3 DRAWER w/ DOOR**  
3 drawers, upper door

WFS 16x85  
WGS 16x90



**FILE WITH w/ DOOR**  
2 lateral file drawers,  
Pencil drawer  
with upper door

XFS 16x85  
XGS 16x90



**GUEST WARDROBE**  
3 drawers with  
2 upper doors  
& clothes valet

PWU 32x85



**ROLLING DESK CART**  
On castors, File Cart  
Rolls underneath.  
Finished open back



DC - 63w x 20d x 31h

**ROLLING FILE CART**  
Lateral file drawer,  
medium drawer and a  
pencil drawer on castors.  
Fits underneath Hidden  
Desk beds and Desk Cart.  
Finished back



FC 16x16x29

**NIGHTSTAND**  
Flush sides on top,  
baseboard  
notch. 2  
drawers with a  
pencil drawer



NS 24x16x29



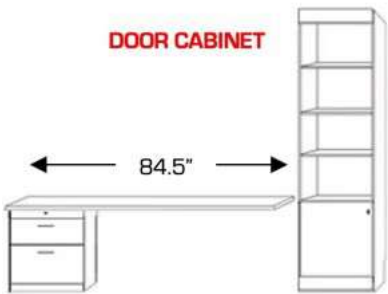
**BOOKCASE**



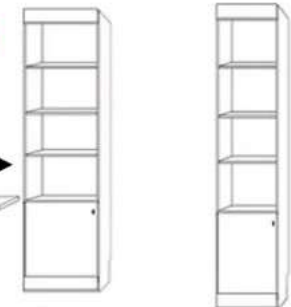
BFS 16x85 BGS 16x90  
PBF 24x85 PBQ 24x90  
BFL 32x85 BQL 32x90

**PLEASE NOTE**  
Horizontal Standard  
& Desk Bed (no hutch)  
Height of piers matches  
height of the wallbed

**DOOR CABINET**



FD - Desk Base  
STRAIGHT Desktop

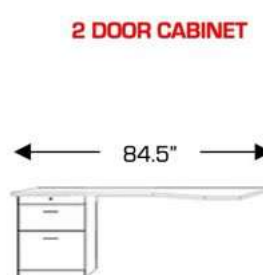


PCF 24x85  
PCQ 24x90

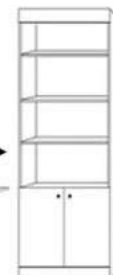


DFS 16x85  
DGS 16x90

**2 DOOR CABINET**



LD - Desk Base  
with SHAPED Desktop



DFL 32x85  
DQL 32x90



**MURPHY DESK**  
48" long  
drop down  
desk with  
adjustable  
shelves

**MURPHY DESK** PAF 24x85



\* Indicates an upgraded paint finish fee of 10%  
Stain finishes are included with no additional fee

